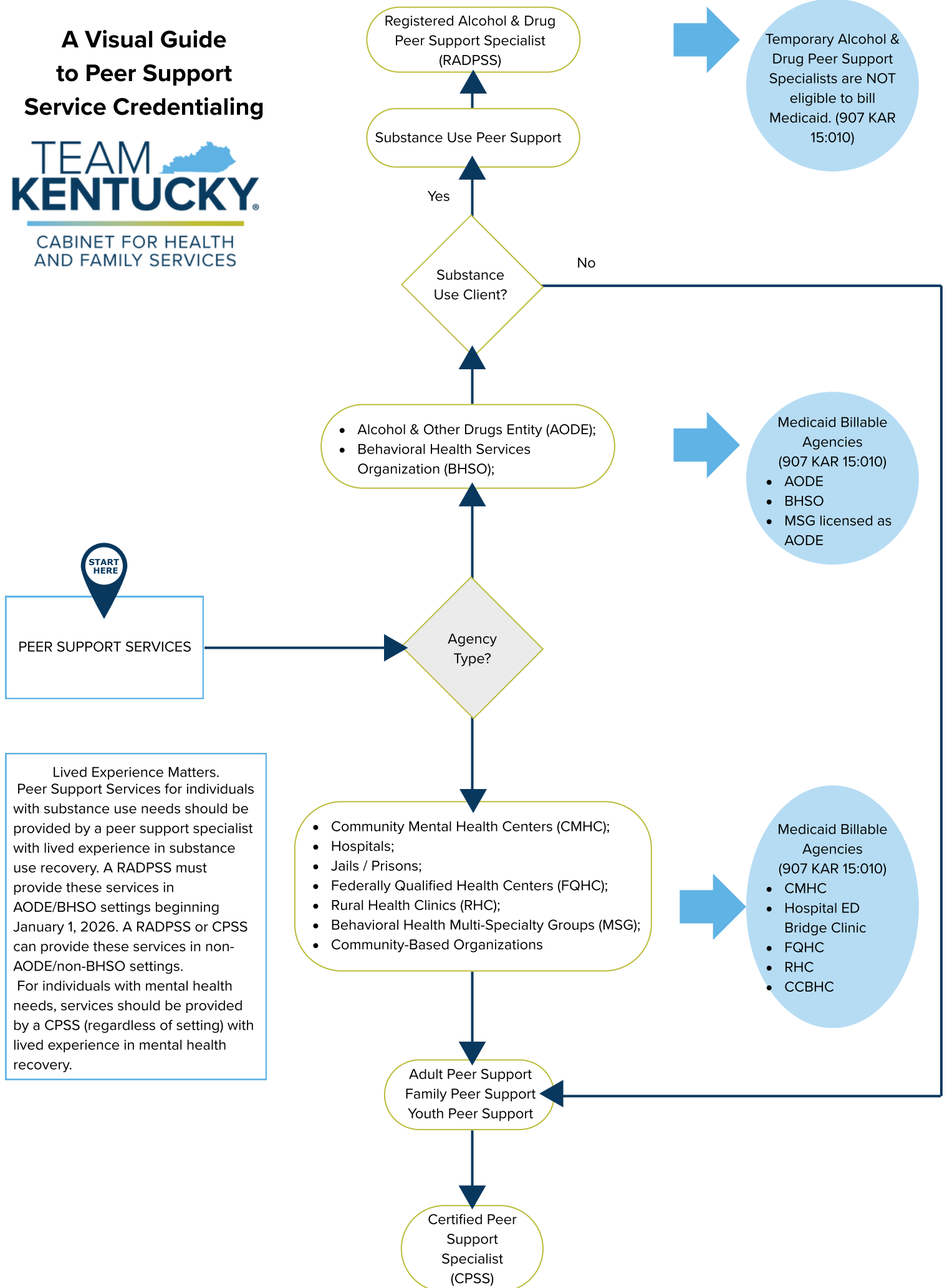


A Visual Guide to Peer Support Service Credentialing



Lived Experience Matters. Peer Support Services for individuals with substance use needs should be provided by a peer support specialist with lived experience in substance use recovery. A RADPSS must provide these services in AODE/BHSO settings beginning January 1, 2026. A RADPSS or CPSS can provide these services in non-AODE/non-BHSO settings. For individuals with mental health needs, services should be provided by a CPSS (regardless of setting) with lived experience in mental health recovery.